



SALEM HEMISPHERE

HEMISPHERE TRAVEL TRAILERS AND FIFTH WHEELS

LITE



HEMISPHERE





23RB

AMARETTO
DECOR

HYPER-LYTE SERIES



			<p>POPULAR OPTIONS A. RECESSED STOVE W/ GLASS STOVE COVER B. ELECTRIC STABILIZER JACKS C. TOUCH SCREEN REMOTE D. LED INTERIOR LIGHTS E. LED UNDER COUNTER LIGHTING F. LED AWNING LIGHT G. POWER TONGUE JACK H. DOUBLE BOWL SINK WITH PULL OUT SPRAYER FAUCET</p>	



24RK

STERLING
DECOR

HYPER-LYTE SERIES



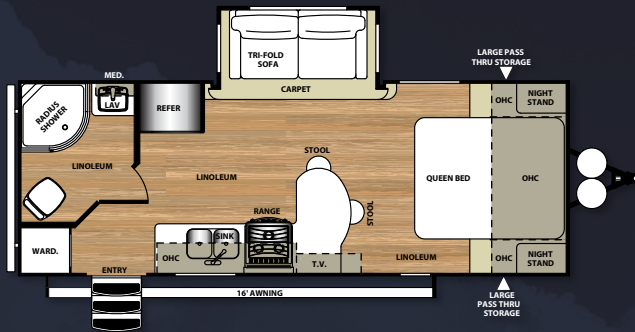
(SHOWN WITH OPTIONAL RESIDENTIAL REFER)



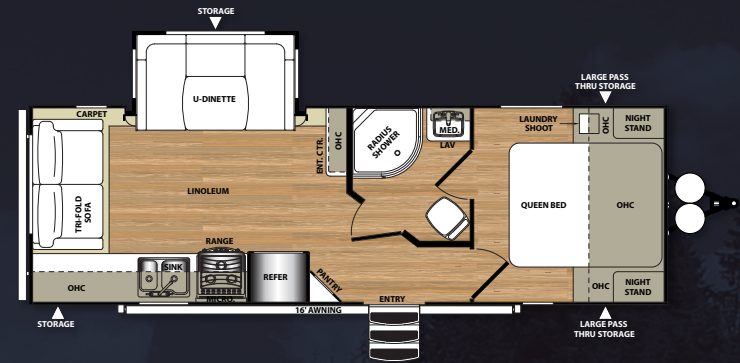
ALL BEDROOMS INCLUDE: DUAL NIGHTSTANDS, 2 OUTLETS,
2 WARDROBE CLOSETS AND 2 OPPOSING DRAWERS AT BED
BASE.



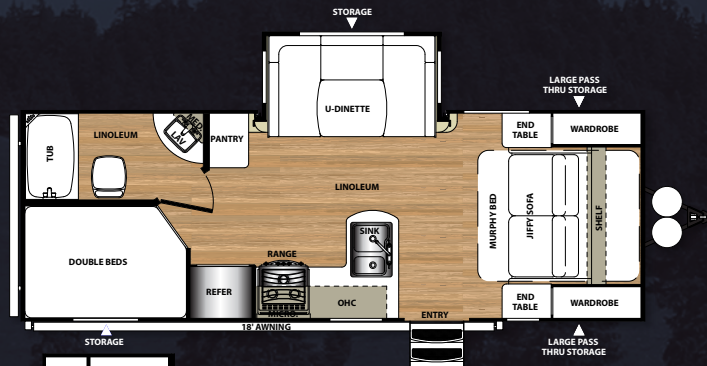
HYPER-LYTE SERIES FLOORPLANS



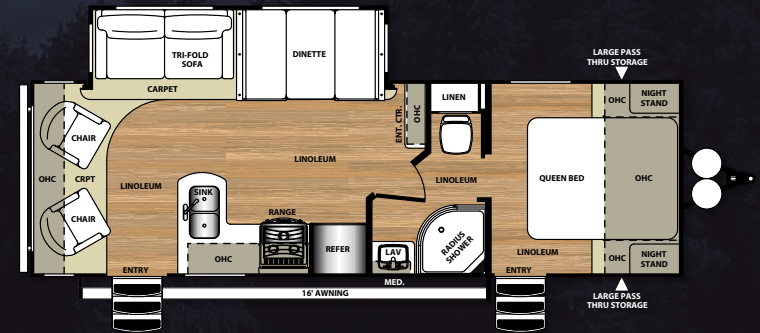
23RB UWW: 4768



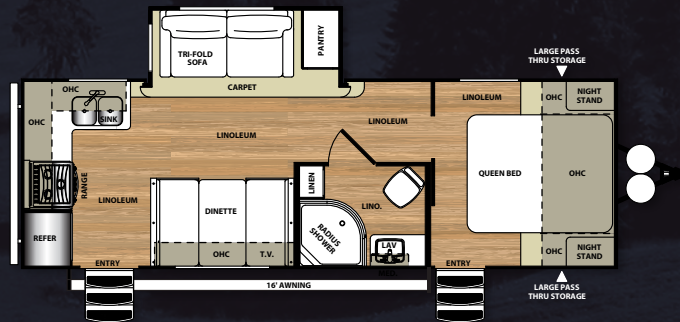
24RLS UWW: 5339



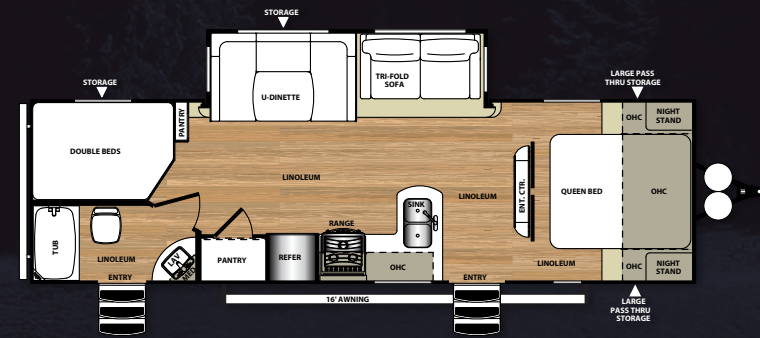
24BH UWW: 5118



26RL UWW: 5808

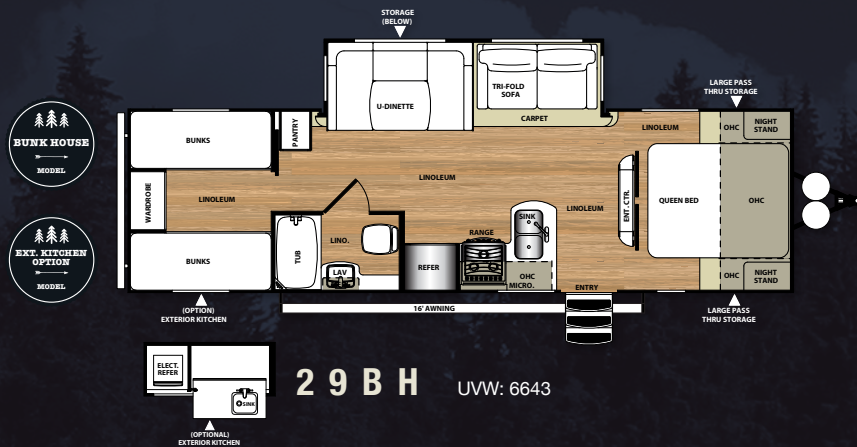


24RK UWW: 5363



27BH UWW: 6398

HYPER-LYTE SERIES STANDARDS AND OPTIONS



HYPER-LYTE CONSTRUCTION/ EXTERIOR FEATURES

- Ultra Lube Axles w/ 15" Radial Tires & Aluminum Wheels
- Aerodynamic Fiberglass Front End
- Wide Track Suspension
- 4 Sided Aluminum-Framed Vacuum-Bonded Construction
- Gel Coated Fiberglass Exterior
- Laminated Sidewalls
- Laminated Floor w/ In-Floor Heat
- 30" Smooth Fiberglass Radius Main Entry Door (26" secondary)
- Swing Arm Entry Assist Handle
- Extra Large Full Pass-Thru Storage (per floorplan)
- One Touch Electric Awning w/ Adjustable Legs (1 year warranty)
- Marine Grade Exterior Speakers w/Blue LED Light
- Exterior TV Bracket w/Cable and Power Outlet
- Upgraded ABS Fender Skirts
- Interior Grab Handle at Entry Door
- Powder Coated I-Beam Frame
- Cambered Chassis
- Water Heater By-Pass
- Norco Cable Slide Out Systems
- 16 Gal. per hour G/E Quick Recovery DSI Water Heater (2 year warranty)
- Stabilizer Jacks
- One Piece Seamless Roof (12 Year Warranty)
- Tinted Safety Glass Windows
- Black Tank Flush

- Extra Large 77" U-Dinette (Per Floorplan)
- Large Dinette Picture Window
- Winegard® TV Antenna
- Cable TV and Satellite Prep
- Decorative Dinette Light
- 30k BTU Suburban Forced Air DSI Furnace (2 Year Warranty) w/ Digital Thermostat
- Under Floor Heat Ducting
- Night Shades
- Tri-Fold Hide-a-Bed Sofa w/ Storage and X-Large Throw Pillows (Most Models)
- Laundry Hamper (Most Models)
- 32" HD TV and CD/DVD/AM/FM w/ MP3 Hookup and Surround Sound

BEDROOM

- Strut Lifted Storage Area Under Bed
- Huge Storage Drawers in Travel Trailer Bed Base (Most Models)
- Oversized Bunks (Per Floorplan)
- Solid Bedroom Privacy Doors
- Mirrored Wardrobes w/ Two Nightstands and Outlets (Most Models)

BATHROOM

- 12-Volt Power Bath Roof Exhaust Vent
- Huge Residential Shower w/ Glass Door Surround (Most Models)
- Wooden Medicine Cabinet w/ Mirrored Door
- Dometic® Foot Flush Toilet
- Tooth Brush Holder and Towel Ring
- Vinyl Tub Surround

SECURITY AND SAFETY

- LP Leak Detector
- Smoke Detector
- Carbon Monoxide Detector
- Fire Extinguisher
- Welded Heavy Duty Safety Chains (Travel Trailers)
- Electric Brakes (all wheels)
- GFI Receptacles
- ANSI 119.2
- Certified to Meet National Highway Traffic Safety Administration Specifications

HYPER-LYTE OPTIONS

- Free-Standing Dinette w/ 4 Chairs
- Whirlpool® Residential Refrigerator w/ Inverter (All Models)
- 15,000 BTU Ducted A/C w/ Quick Cool
- Outside Shower

Contact your Hemisphere dealer for a complete list of options

KITCHEN

- Dometic® Double Door Refrigerator (2 Year Warranty)
- Residential, Double Bowl Sink
- Microwave w/ Carousel (1 Year Warranty)
- High Rise, Pull-Out Sprayer Faucet
- Vented Range Hood w/ Light
- Beau® Plank Wood Linoleum
- Solid Wood Drawer Fronts w/ Full Extension Ball Bearing Guides
- Solid Wood Raised Upper Panel Doors
- Large Overhead Cabinets (per Floor Plan)
- Wall-Mounted Systems Monitor Panel
- Satin Nickel Hardware

LIVING ROOM

- Satin Nickel Hardware
- 13,500 BTU Ducted Roof Air Conditioner w/ Quick Cool (2 Year Warranty)
- Residential Stain Resistant Carpet
- Rocker Recliners (Per Floorplan)
- Oversized Dinette w/ Large Pot and Pan Drawers (Per Floorplan)
- Deluxe Dinette Tabletop
- Solid Wood Drawer Fronts

HYPER-LYTE SERIES SPECIFICATIONS

MODEL	23RB	24BH	24RK	24RLS	26RL	27BH	29BH
Hitch Weight (lbs)	520	510	585	580	634	715	735
Axle Weight	4210	4570	4740	4700	5136	5645	5870
UVW	4768	5118	5363	5339	5808	6398	6643
CCC (cargo cap)	2752	2392	2222	2241	1826	3117	2892
Ext Length	25'11"	27'	28'7"	29'2"	30'1"	32'8"	32'7"
Ext Height	10'8"	10'8"	10'8"	10'8"	10'8"	11'	11'
Fresh Water Cap (gal)*	54	54	54	54	54	54	54
Black Water Cap (gal)	30	30	30	30	30	30	30
Grey Water Cap (gal)	30	30	60	60	30	60	60
Tire Size (in)	15"	15"	15"	15"	15"	15"	15"
Awning Size (ft)	16'	18'	16'	16'	16'	16'	16'

See back cover for more information on weights. *Includes water heater.



(SHOWN WITH OPTIONAL RESIDENTIAL REFER)



(SHOWN WITH OPTIONAL TV)



HEMISPHERE TRAVEL TRAILER SERIES

272RL

STERLING
DECOR



RESIDENTIAL TOUCH



311QB

AMARETTO
DECOR

HEMISPHERE TRAVEL TRAILER SERIES



L

G

14"

A

D

Q

O

6'8"

F

C

E

N

M

I

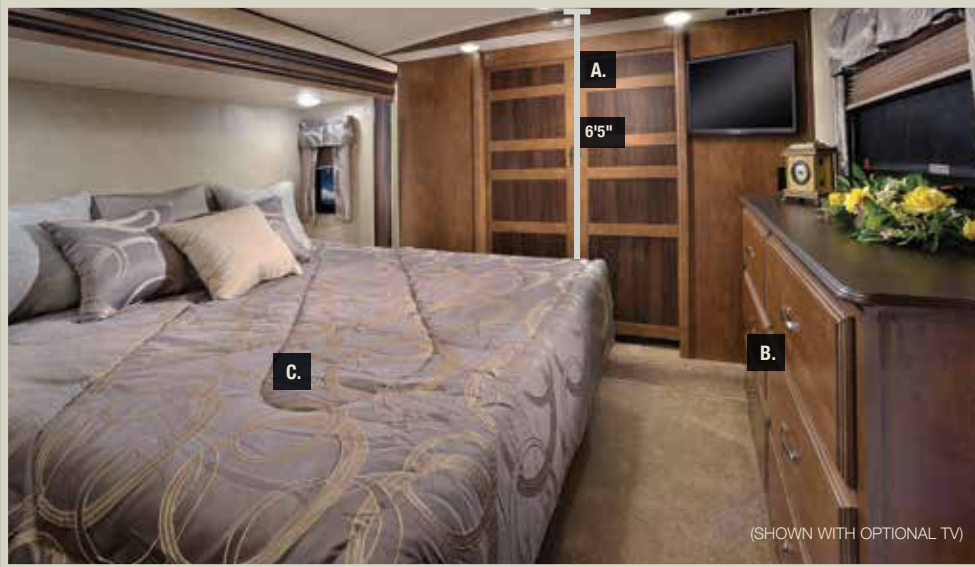
B



INTERIOR FEATURES

- A OVERHEAD CABINET 14" DEEP FOR LARGE PLATES
- B HUGE STORAGE DRAWERS AT BASE OF DINETTE
- C 6'8" TRAVEL TRAILER INTERIOR HEIGHT
- D DUCTED AIR CONDITIONING
- E LG SOLID SURFACE COUNTERTOPS
- F AM/FM, CD PLAYER W/ MP3 HOOKUP
- G DECORATIVE OVERHEAD DINING LIGHT
- H SOLID WOOD FRAME MORTISE AND TENON DOORS
- I U-DINETTE (MOST BUNK MODELS)
- J RESIDENTIAL STAINLESS STEEL MICROWAVE
- K 3-BURNER RANGE WITH STAINLESS STEEL OVEN & VENT HOOD
- L BRUSHED NICKEL CURTAIN RODS
- M ONE PIECE PLANK WOOD LINOLEUM FLOORING
- N RESIDENTIAL STYLE CARPET
- O 32" LCD TV (STANDARD ALL 5TH WHEELS & TRAVEL TRAILERS)
- P FULL EXTENSION BALL BEARING DRAWER GUIDES
- Q LED INTERIOR LIGHTING





BED and BATH FEATURES:

- A. 6' 5" FULL STAND UP HEIGHT, ONE LEVEL UPPER DECK**
- B. 6 DRAWER DRESSER**
- C. CUSTOM KING BED (MOST MODELS)**
- D. HUGE RESIDENTIAL TUB/SHOWER WITH BENCH**
- E. MIRRORED MEDICINE CABINET**
- F. FOOT FLUSH TOILET**



HEMISPHERE FIFTH WHEEL SERIES

337BAR

AMARETTO
DECOR



RESIDENTIAL FEEL



368RLBHK

**AMARETTO
DECOR**

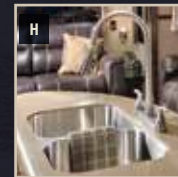
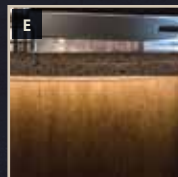
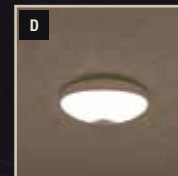
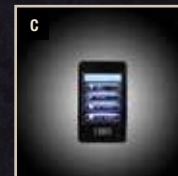
HEMISPHERE FIFTH WHEEL SERIES



HEMISPHERE FIFTH WHEEL MID-BUNK ROOM



POPULAR OPTIONS



A. RECESSED STOVE W/ GLASS STOVE COVER B. ELECTRIC STABILIZER JACKS C. TOUCH SCREEN REMOTE
D. LED INTERIOR LIGHTS E. LED UNDER COUNTER LIGHTING F. LED AWNING LIGHT G. POWER TONGUE JACK
H. STAINLESS STEEL DOUBLE BOWL SINK

HEMISPHERE SERIES EXTERIOR KITCHEN



OUTDOOR COOKING

THE EXTERIOR KITCHEN OPTION IS AVAILABLE ON SELECT MODELS OF BOTH FIFTH WHEELS AND TRAVEL TRAILERS AND FEATURES:

- PRESSED METAL COUNTERTOP AT LOW, WORKABLE HEIGHT
- HUGE CABINETS FOR STORAGE
- LARGE MINI FRIDGE
- HIGH RISE FAUCET WITH HOT AND COLD WATER
- DEEP BOWL SINK WITH PLUMBING TO ADDITIONAL ENCLOSED GREY TANK
- CONVENIENT 110V OUTLET
- BUMPER MOUNTED, SWING ARM GAS GRILL WITH LP HOOK UP



HEMISPHERE SERIES FEATURES



Deluxe wood dinette table top



Radius edge LG® solid surface kitchen countertops



Wide track suspension (travel trailers only) with aluminum rims



Standard exterior TV bracket on every Hemisphere



Convenient laundry chute directly to pass thru storage



Heated and enclosed underbelly



Extra large pot and pan drawer at the dinette base



Huge finished and insulated fifth wheel pass-thru storage



Painted gel coat fiberglass front cap with light strips on Lite Series Travel Trailers and Fifth Wheels, won't fade, chalk or crack



Docking station with quick winterization feature (fifth wheels only)

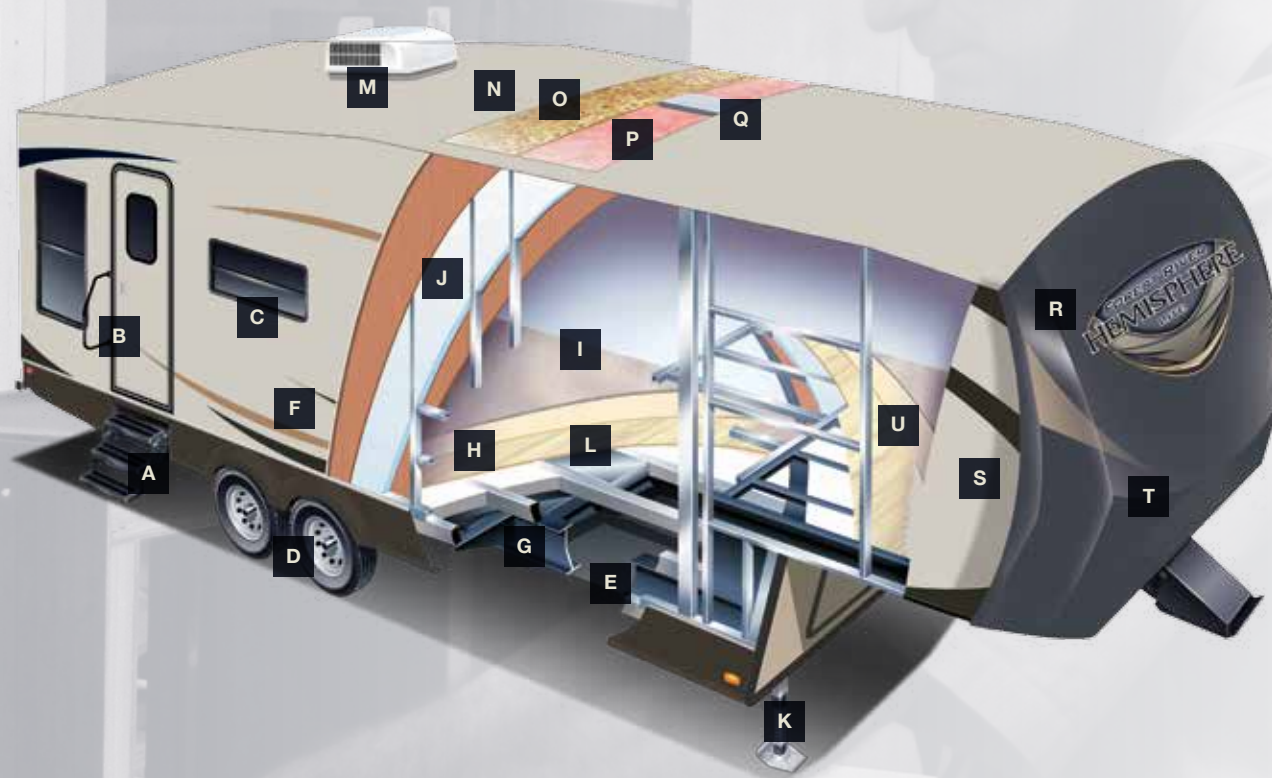


HYPERLYTE CONSTRUCTION



ALUMA-STRUCTURE VACUUM BONDED

The Salem Hemisphere has a Welded Aluminum Superstructure that is regarded as the industry's finest, pictured above is the heavier gauge aluminum tubing used by Hemisphere vs. The Competitions lighter gauge aluminum.



- A Triple Entry Steps
- B Folding Entry Assist Handle
- C Tinted Safety Glass Windows
- D Ultra Lube Axles
- E Heated and Enclosed Underbelly
- F Laminated Vacuum Bonded Aluminum Sidewalls
- G I-Beam Powder-Coated Frame with Cambered Chassis
- H Laminated Vacuum Bonded Floor
- I Residential Stain Resistant Carpet
- J High Density Block Foam Insulation
- K Power Front Landing Gear (Fifth Wheels Only)
- L Under-Floor Ducted Heat
- M Ducted 13.5 K BTU High Output Air Conditioning
- N One Piece Seamless Roof (12 yr. Warranty)
- O 3/8" Roof Decking (Full Walk-On Roof)
- P R-14 Fiberglass Insulation in Ceiling, Front Cap & Rear Wall
- Q Standard Insulated Duct for Central Air (all Models)
- R Painted and Gel Coated Fiberglass Front Cap
- S Gel Coated Fiberglass Exterior
- T Sharp Turn Radius Front Cap
- U Laminated and Vacuum Bonded Upper Deck



SUPERIOR CRAFTSMANSHIP

ONLY THE FINEST ATTENTION TO DETAIL GOES INTO EACH HEMISPHERE. OUR SKILLED CRAFTSMAN HAVE MANY YEARS OF EXPERIENCE BUILDING BEAUTIFULLY FINISHED CABINERY. THE SOLID NATURE OF OUR WELL DESIGNED WOODWORK IS ANOTHER REASON WHY HEMISPHERE IS THE BEST BUILT RV ON THE ROAD.



PREPARED FOR THE SEASONS

- HEATED AND ENCLOSED UNDERBELLY WITH UNDER-FLOOR DUCTED HEATING
- HIGH DENSITY, BLOCK FOAM INSULATION (SIDEWALL AND FLOOR)
- DOUBLE LAYERED FIBERGLASS INSULATION (ROOF, FRONT AND REAR WALL)
- HIGH EFFICIENCY AIR CONDITIONING SYSTEM WITH THICK, INSULATED DUCTING

HEMISPHERE SERIES STANDARDS, OPTIONS AND DECORS

HEMISPHERE CONSTRUCTION/ EXTERIOR FEATURES

- Ultra Lube Axles w/ 15" Radial Tires (16" on Select Models) & Aluminum Wheels
- Painted Fiberglass Front Cap
- Aerodynamic Travel Trailer & Fifth Wheel Front Cap w/ LED Light Strip(s)
- Wide Track Suspension (Travel Trailers)
- 3 Sided Aluminum-Framed Vacuum-Bonded Construction
- Gel Coated Fiberglass Exterior
- Laminated Sidewalls
- Laminated Floor w/ In-Floor Heat
- 6'5" Full Walk-In 5th Wheel Slide-Outs (N/A bed slides)
- One Level, Full Stand-Up Height 5th Wheel Upper Decks
- 30" Smooth Fiberglass Radius Main Entry Door (26' secondary)
- Swing Arm Entry Assist Handle
- Extra Large Full Pass-Thru Storage (per floorplan)
- One Touch Electric Awning w/ Adjustable Legs (1 year warranty)
- Marine Grade Exterior Speakers w/Blue LED Light
- Exterior TV Bracket w/Cable and Power Outlet
- Upgraded ABS Fender Skirts
- Grab Handle at 5th Wheel Interior Steps
- Interior Grab Handle at Entry Door
- Powder Coated I-Beam Frame
- Cambered Chassis
- Water Heater By-Pass
- Fifth Wheel Docking Station
- Power Flush Floor Slide-Out Systems
- 16 Gal. per hour G/E Quick Recovery DSI Water Heater (2 year warranty)
- Stabilizer Jacks
- Backer for Rear Ladder
- One Piece Seamless Roof (12 Year Warranty)
- Full Walk-on Roof

- Power Front Landing Gear (5th Wheels)
- Tinted Safety Glass Windows
- Black Tank Flush

KITCHEN

- LG® Solid Surface Countertops
- Stainless Steel Dometic® Double Door Refrigerator (2 Year Warranty)
- Residential, Under Mount Sink
- Mosaic Tile Kitchen Backsplash
- Stainless Steel Microwave w/ Carousel (1 Year Warranty)
- High Rise, Pull-Out Sprayer Faucet
- Stainless Steel Vented Range Hood w/ Light
- Beau® Plank Wood Linoleum
- Solid Wood Drawer Fronts w/ Full Extension Ball Bearing Guides
- Solid Wood Raised Upper Panel Cabinet Doors
- Large Overhead Cabinets
- Wall-Mounted Systems Monitor Panel
- Satin Nickel Hardware
- Large Residential Pantry (Select Models)
- Residential Hanging Pendant Lights (Most Models)

LIVING ROOM

- 13,500 BTU Ducted Roof Air Conditioner w/ Quick Cool (2 Year Warranty)
- Residential Stain Resistant Carpet
- Rocker Recliners (Per Floorplan)
- Theatre Seating w/ Built-In Recliners (Per Floorplan)
- Oversized Dinette w/ Large Pot and Pan Drawers (Per Floorplan)
- Deluxe Dinette Tabletop
- Solid Wood Drawer Fronts
- Extra Large 77" U-Dinette (Per Floorplan)
- Large Dinette Picture Window
- 360° Omni Directional Digital TV Antenna
- Cable TV and Satellite Prep

- Extra Large Overhead Cabinets w/ Glass Inserts
- Decorative Dinette and Wall Light
- 30 or 35K BTU Suburban Forced Air DSI Furnace (2 Year Warranty) w/ Digital Thermostat
- Under Floor Heat Ducting
- Night Shades
- Tri-Fold Hide-a-Bed Sofa w/ Storage and X-Large Throw Pillows
- Laundry Hamper (Most Travel Trailers)
- 32" HD TV and CD/DVD/AM/FM w/ MP3 Hookup and Surround Sound

BEDROOM

- Custom King Bed in All Bedroom Slide Travel Trailers and Fifth Wheels
- Strut Lifted Storage Area Under Bed
- Huge Storage Drawers in Travel Trailer Bed Base (Most Models)
- Oversized Bunks (Per Floorplan)
- Solid Bedroom Privacy Doors
- Mirrored Wardrobes w/ Two Nightstands and Outlets Most Travel Trailers)
- Full Length Wall Mirror (5th Wheel Bedrooms)
- Swing Arm TV Bracket (5th Wheel Bedrooms)
- Tall, 6 Drawer Dressers (Most 5th Wheels)

BATHROOM

- 30" x 50" Walk-in Shower w/ Sliding Glass Door (5th Wheels)
- 12-Volt Power Bath Roof Exhaust Vent
- Wooden Medicine Cabinet w/ Mirrored Door
- Dometic® Foot Flush Toilet
- Tooth Brush Holder and Towel Ring
- Vinyl Tub Surround

SECURITY AND SAFETY

- LP Leak Detector
- Smoke Detector
- Carbon Monoxide Detector
- Fire Extinguisher
- LED Hitch Light
- Welded Heavy Duty Safety Chains (Travel Trailers)
- Electric Brakes (all wheels)
- GFI Receptacles
- ANSI 119.2
- Certified to Meet National Highway Traffic Safety Administration Specifications

HEMISPHERE OPTIONS

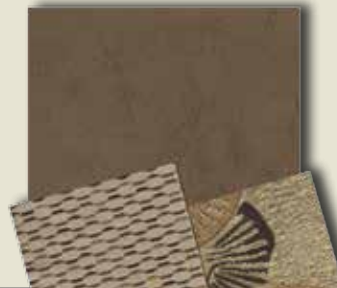
- Free-Standing Dinette w/ 4 Chairs
- La-Z-Boy Rocker Recliner (2)
- Living Room Ceiling Paddle Fan (5th wheels)
- Whirlpool® Residential Refrigerator w/ Inverter (All Models)
- Roof Ladder
- 15,000 BTU Ducted A/C w/ Quick Cool
- Outside Shower (Travel Trailers)
- 50 Amp Service
- Washer/Dryer Prep (5th Wheels)

Contact your Hemisphere dealer for a complete list of options.

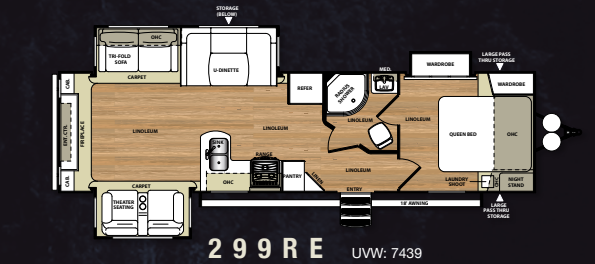
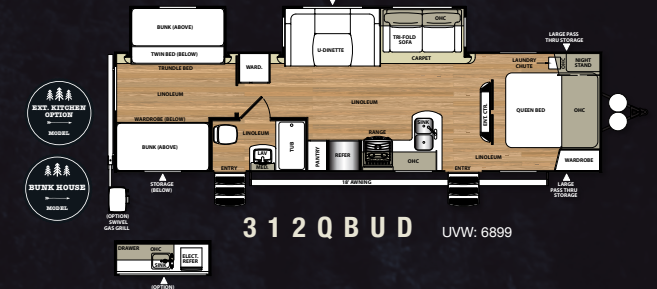
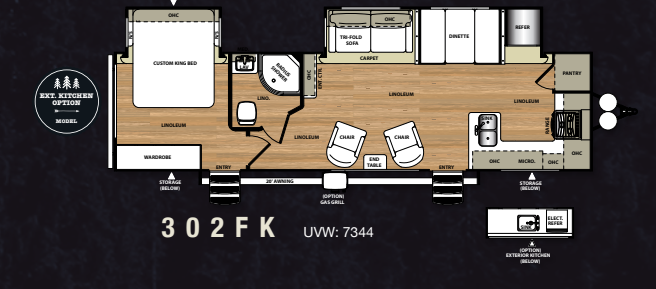
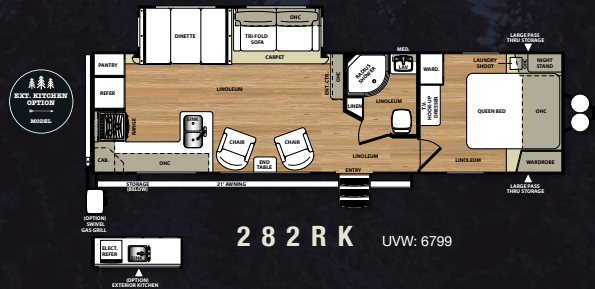
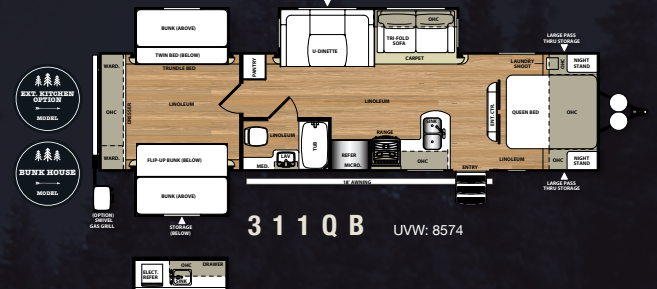
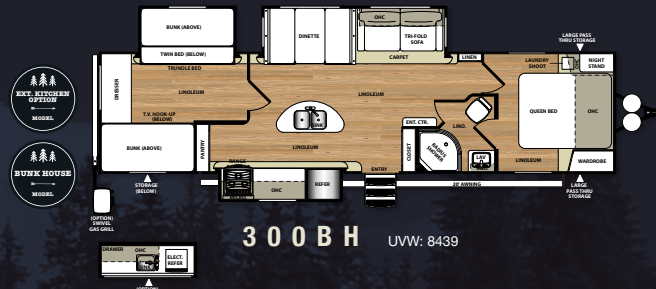
AMARETTO DECOR



STERLING DECOR



HEMISPHERE TRAVEL TRAILER SERIES FLOORPLANS

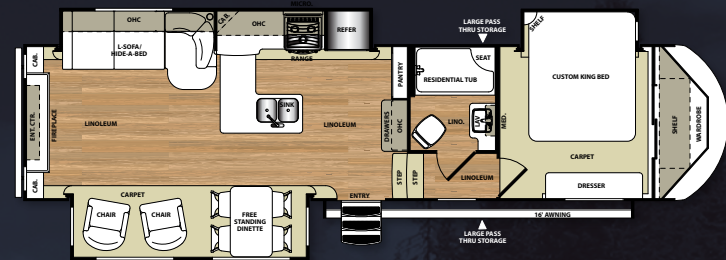


SPECIFICATIONS

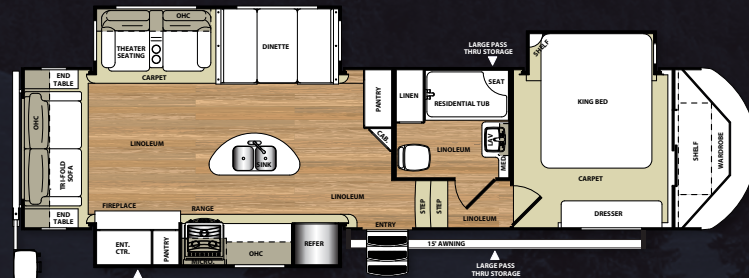
MODEL	272RL	282RK	299RE	300BH	302FK	311QB	312QBUD
Hitch Weight (lbs)	845	700	730	570	1060	936	855
Axle Weight	6390	6040	6650	7810	6225	7579	5985
UWW	7294	6799	7439	8439	7344	8574	6899
CCC (cargo cap)	2351	2701	2091	2291	2516	2522	2601
Ext Length	34'4"	35'	35'1"	37'5"	35'6"	37'6"	35'10"
Ext Height	11'	11'	11'	11'	11'2"	11'	11'
Fresh Water Cap (gal)*	54	54	54	54	54	54	54
Black Water Cap (gal)	30	30	30	30	30	30	30
Grey Water Cap (gal)	48	60	30	78	60	48	48
Tire Size (in)	15"	15"	15"	15"	15"	15"	15"
Awning Size (ft)	20'	21'	18'	20'	20'	18'	18'

See back cover for more information on weights. *Includes water heater.

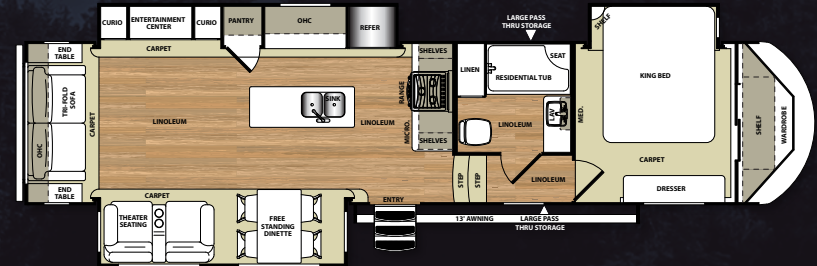
HEMISPHERE FIFTH WHEEL SERIES FLOORPLANS



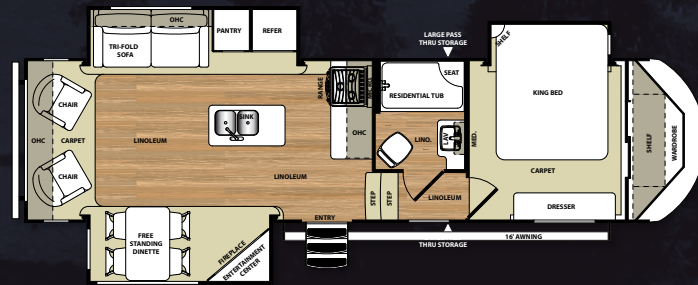
327RE UJV: 9455



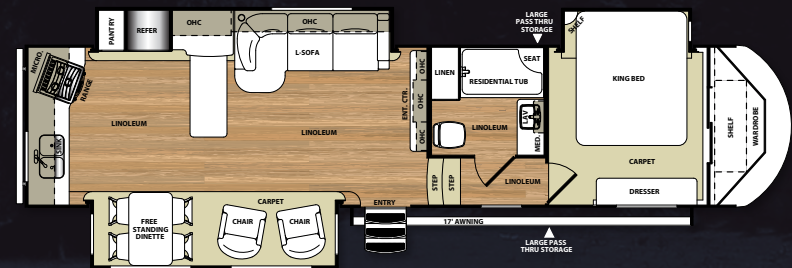
276RLIS UJV: 9404



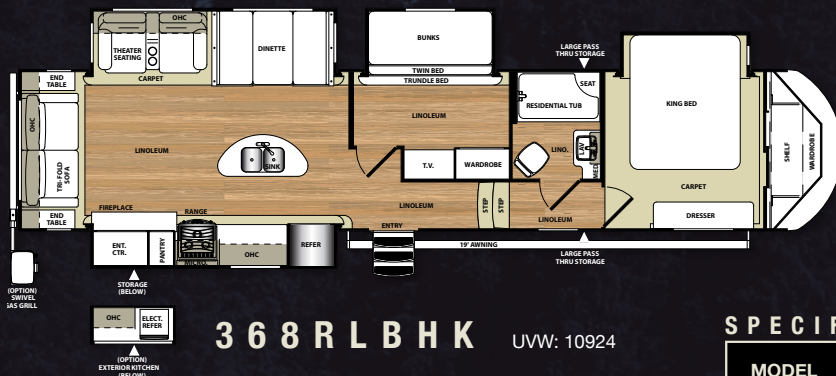
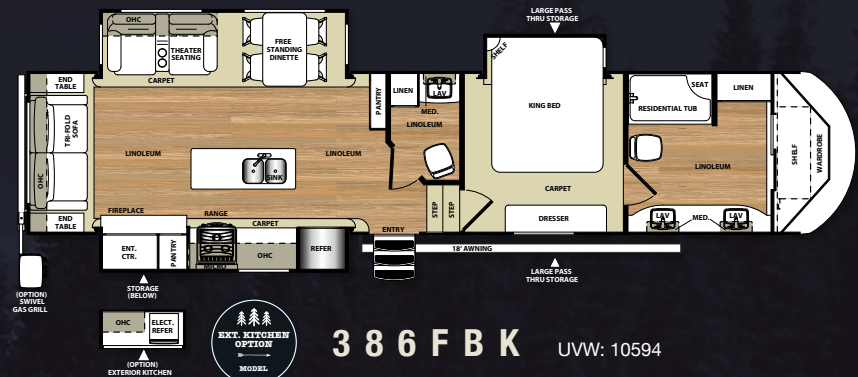
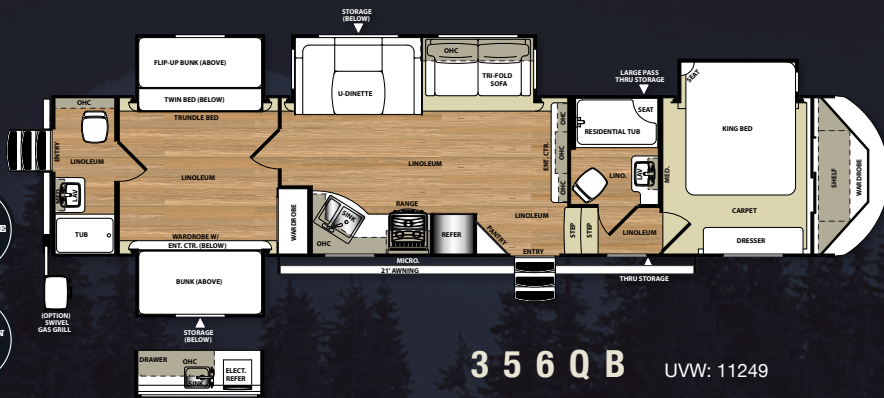
337BAR UJV: 10069



286RL UJV: 8499



346RK UJV: 10004



SPECIFICATIONS

MODEL	276RLIS	286RL	327RE	337BAR	346RK	356QB	368RLBHK	386FBK
Hitch Weight (lbs)	1795	1625	1795	1990	1840	1790	2080	2040
Axle Weight	7550	6815	7690	8020	8105	9400	8785	8495
UVW	9404	8499	9544	10069	10004	11249	10924	10594
CCC (cargo cap)	2791	3286	2651	2321	2236	2541	3156	3446
Ext Length	36'3"	32'7"	36'5"	39'7"	38'6"	42'3"	42'	40'8"
Ext Height	12'10"	12'10"	13'	13'2"	13'2"	13'2"	13'2"	13'2"
Fresh Water Cap (gal)*	54	54	54	54	54	54	54	54
Black Water Cap (gal)	30	30	30	30	30	60	30	60
Grey Water Cap (gal)	62	60	60	60	60	90	60	60
Tire Size (in)	16"	15"	16"	16"	16"	16"	16"	16"
Awning Size (ft)	15'	16'	16'	13'	17'	21'	19'	18'

See back cover for more information on weights. *Includes water heater.



PRE-DELIVERY INSPECTION FACILITY

20,000 square feet of quality assurance. The bare essentials for a premium product. This state-of-the-art facility gives immediate daily feedback to production for quality assurance in every unit built.



Forest River, Inc. encourages our customers to purchase their Forest River products from a local dealership whenever possible for the following reasons:

It is the goal of Forest River, Inc. that all of our RV owners fully enjoy the RV experience and that customer satisfaction meets or exceeds their expectations!

- 1) Forest River, Inc. dealers are independently owned and operated businesses so priority service and scheduling is at their discretion and is often provided to customers that purchased their unit at that dealership.
- 2) Purchasing locally allows customers to establish meaningful relationships with a dealer, enhancing the RV experience through assistance with product questions, user tips or RV regulations for your state or country, and much more!
- 3) Canadian customers must meet requirements to bring an RV purchased out of the country to their home. These requirements may involve additional inspections and certifications, taxes and fees. Your local Canadian Dealer is a professional at meeting these requirements.
- 4) Scheduling timely warranty repairs and adjustments through a local dealership provides far greater flexibility and convenience to you, the customer!

24/7 EMERGENCY ROADSIDE ASSISTANCE

For a worry-free ownership experience

Coach-Net®

RV Technical & Roadside Assistance

Forest River includes one year of Coach-Net RV Technical & Roadside Assistance with each RV purchase. Whether new to the RV lifestyle or an experienced RV enthusiast, Forest River owners have 24/7 access to technical, operational and emergency road service coverage throughout the US & Canada. Coach-Net's fast, dependable service is just a phone call away.

FREE MEMBERSHIP
to Forest River Owners' Group

www.forestriverfrog.com



GVWR (Gross Vehicle Weight Rating) - is the maximum permissible weight of the unit when fully loaded. It includes all weights, inclusive of all fluids, cargo, optional equipment and accessories. For safety and product performance do NOT exceed the GVWR.

GAWR (Gross Axle Weight Rating) - is the maximum permissible weight, including cargo, fluids, optional equipment and accessories that can be safely supported by a combination of all axles.

UVW (Unloaded Vehicle Weight)* - is the typical weight of the unit as manufactured at the factory. It includes all weight at the unit's axle(s) and tongue or pin and LP Gas. The UVW does not include cargo, fresh potable water, additional optional equipment or dealer installed accessories.

*Estimated Average based on standard build optional equipment.

CCC (Cargo Carrying Capacity)** - is the amount of weight available for fresh potable water, cargo, additional optional equipment and accessories. CCC is equal to GVWR minus UVW. Available CCC should accommodate fresh potable water (8.3 lbs per gallon). Before filling the fresh water tank, empty the black and gray tanks to provide for more cargo capacity.

** Estimated average based on standard build optional equipment

Each Forest River RV is weighed at the manufacturing facility prior to shipping. A label identifying the unloaded vehicle weight of the actual unit and the cargo carrying capacity is applied to every Forest River RV prior to leaving our facilities.

The load capacity of your unit is designated by weight, not by volume, so you cannot necessarily use all available space when loading your unit.

All information contained in this brochure is believed to be accurate at the time of publication. However, during the model year, it may be necessary to make revisions and Forest River, Inc., reserves the right to make all such changes without notice, including prices, colors, materials, equipment and specifications as well as the addition of new models and the discontinuance of models shown in this brochure. Therefore, please consult with your Forest River dealer and confirm the existence of any materials, design or specifications that are material to your purchase decision.



Learn More

Scan this barcode using a QR Reader on your smart phone to learn more about Forest River.



A Berkshire Hathaway company.

Forest River, Inc.
55470 C.R. 1, Elkhart, IN 46515
(574) 389-4600
www.forestriverinc.com/hemisphere
www.forestriveraccessories.com

YOUR LOCAL HEMISPHERE DEALER